



Insulation Blowing Machine

part#: K81018

### Exceptional Performance

Intec's highly portable and easy to use Cyclone insulation blowing machine simplifies Do-It-Yourselfers insulation activities. This simple to use system provides ease of transportation to the job site and timely installation of attic insulation – approximately ¾ hour to install R-19 cellulose and 1 hour to install R-19 fiberglass in a 1000 square foot attic.

### Ease of Use

The system's control panel and wired remote provide for ease of operation from either the unit or the attic. Ease of transfer between retail location and jobsite is enabled by its small size & built-in wheels. Hose, connectors and clamps come standard -- everything you need to begin using immediately.

### Versatile Capabilities

The Cyclone comes equipped with a slide gate to control material flow -- providing its users sidewall retrofit capabilities in addition to attic installations. Be it cellulose drill & fill, or fiberglass dense pack, this system can do-it-all.



***When looking for a capable, versatile, Do-It-Yourself unit with a track record of rigorous use, look no further than Intec's Cyclone.***

### Total Reliability

The powder coated exterior enables demanding use, while the automatic chain tensioner provides for high uptime capability. Minimal maintenance, combined by support from Intec's technical service team, provides for a system experience offering some of the highest industry uptimes and lowest life-cycle costs.

800-666-1611

www.inteccorp.com

Rev: 20180124

**VORTEC**® Intec's Professional Grade Equipment  
High Powered Vacuums Engineered for High Productivity Built-to-Last for High Value Generation

**FORCE**®

Insulation Blowing Machines



## Specifications



- Weight: 173lbs (78.6kg)
- Hose outlet: 2-1/2 inches (6.4cm)
- Power Requirements: 115VAC, 60Hz, 15 amp (20 amp recommended) or 230VAC, 50Hz, 10 amp
- Power Cord: 1 - 14/3 x 6 foot 'pigtail' provided.
- Remote Cord: 16/4 x 100'
- Warranty: 1 year limited.

### Production Rates:

#### Cellulose:

- 39 bags/hr
- 970 lbs/hr (441kg/hr)

#### Fiberglass:

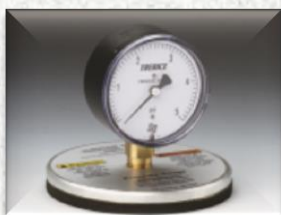
- 8-1/2 bags/hr
- 255 lbs/hr (116kg/hr)

## Accessories

### Hopper Extension



### Pressure Gauge



## Machine Features



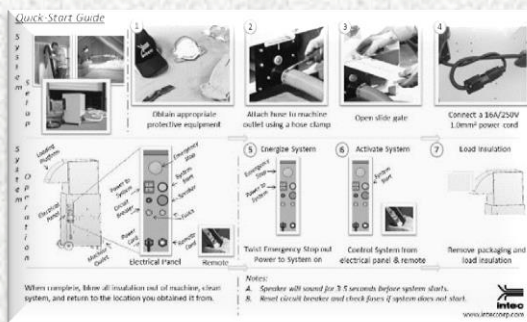
Control panel and wired remote provide ease of operation from either unit or location of install.



Slide gate adds to application versatility



Access panel simplifies maintenance



Quick-Start Guide simplifies user's experience

**Backed by Intec's industry leading Technical Service.**

**Training & Accessories are available to increase your efficiencies.**

### The Intec Pledge

Provide the finest equipment in the industry while continuing to strive for 100% satisfaction.

## Manufactured By



4040 Kodiak Court  
Frederick, CO 80504



1-800-666-1611  
www.inteccorp.com

Local: 303-833-6644  
Fax: 303-833-6650  
sales@inteccorp.com