



part#: K81018

Insulation Blowing Machine

When looking for a capable, versatile, Do-It-Yourself unit with a record of rigorous use, look no further than Intec's Cyclone

Exceptional Performance

Intec's highly portable and easy to use Cyclone insulation blowing machine simplifies Do-It-Yourselfers insulation activities. This simple to use system provides ease of transportation to the job site and timely installation of attic insulation – approximately ¾ hour to install R-19 cellulose and 1 hour to install R-19 fiberglass in a 1000 square foot attic.

Ease of Use

The system's control panel and wired remote provide for ease of operation from either the unit or the attic. Ease of transfer between retail location and jobsite is enabled by its small size & built-in wheels. Hose, connectors and clamps come standard -- everything you need to begin using immediately.

Versatile Capabilities

The Cyclone comes equipped with a slide gate to control material flow -- providing its users sidewall retrofit capabilities in addition to attic installations. Be it cellulose drill & fill, or fiberglass dense pack, this system can do-it-all.



Total Reliability

The powder coated exterior enables demanding use, while the automatic chain tensioner provides for high uptime capability. Minimal maintenance, combined by support from Intec's technical service team, provides for a system experience offering some of the highest industry uptimes and lowest life-cycle costs.

integrity

excellence

innovation

trust

303-833-6644

www.inteccorp.com

Rev: 20230122

Intec's Professional Grade Equipment



Engineered for High Productivity

Built-to-Last for High Value Generation



Insulation Blowing Machines



Specifications



- Weight: 173lbs (78.6kg)
- Hose outlet: 2-1/2 inches (6.4cm)
- Power Requirements: 115VAC, 60Hz, 15 amp (20 amp recommended) or 230VAC, 50Hz, 10 amp
- Power Cord: 1 – 100' cord.
- Remote Cord: 16/4 x 100'
- Warranty: 1 year limited.

Production Rates:

- | | |
|-------------------------|-------------------------|
| Cellulose: | Fiberglass: |
| • 39 bags/hr | • 8-1/2 bags/hr |
| • 970 lbs/hr (441kg/hr) | • 255 lbs/hr (116kg/hr) |

Accessories

Hopper Extension



Pressure Gauge



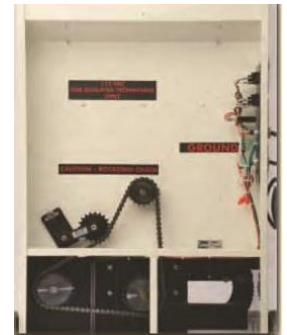
Machine Features



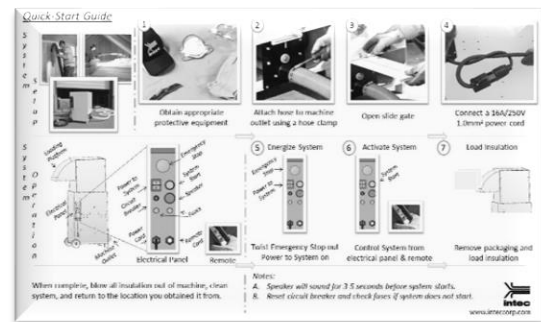
Control panel and wired remote provide ease of operation from either unit or location of install.



Slide gate adds to application versatility



Access panel simplifies maintenance



Quick-Start Guide simplifies user's experience

Backed by Intec's industry leading Technical Service Training & Accessories are available to increase your efficiencies

Distributed by



Manufactured by

Insulation Technology Corporation, d.b.a. Intec
9251 Bruin Boulevard
Frederick, CO 80504



Local: 303-833-6644
Fax: 303-833-6650
sales@inteccorp.com

www.inteccorp.com

VORTEC® high-powered vacuums



... it's the 'tec' inside that counts!

FORCE® insulation blowing machines