

# FORCE® Recycle Hood

Intec Part #: J56050-02-S

Trailer / Truck Mount Insulation Blowing Machine Accessory

**FORCE® - The Truck Mount Blowing Machine Brand that will change the industry standard**

❖ **Engineered for High Productivity**

❖ **Built-to-Last for High Value Generation**



Recycle Hood

*Intec's FORCE® Recycle Hood enables your truck mount machine to effectively recycle damp spray cellulose or fiberglass. It's 6" inlet allows for high-volume recycle, while its construction quickly separates the product from the incoming airstream minimizing hopper turbulence and maximizing recycle efficiencies and \$.*



See it in action >>

integrity

excellence

innovation

trust

303-833-6644

[www.inteccorp.com](http://www.inteccorp.com)

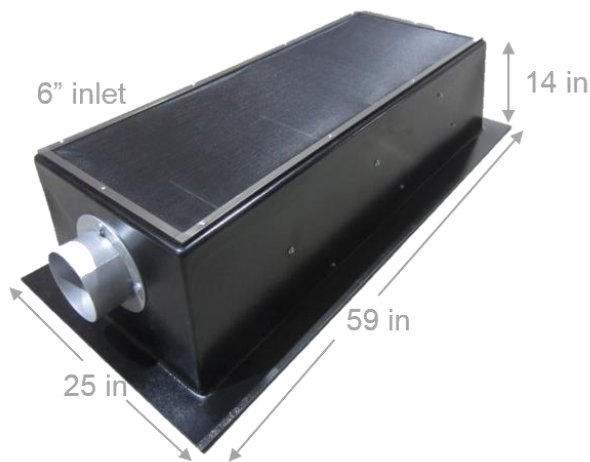
Rev: 20240120



**FORCE®**  
Insulation Blowing Machines



## Specifications

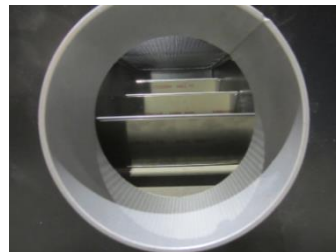


- Lightweight durable Lexan.
- 59" long X 25" deep X 14" tall.
- 6" inlet.
- Warranty: 1 year limited

Specifications subject to change; contact Intec for current specifications

## Machine Features

6" inlet – can be reduced to 4" if desired – provides for high volumes of recycle.



Screened top with interior baffles allows product to fall back into hopper while high volumes of air escape from the top. Hopper turbulence is minimized.



Extensions added to completely seal hopper – no mess.

## Additional Intec Systems & Accessories

### Heavy Duty Capabilities



Dense Pack



Blow Behind Netting



Spray On



Attics

### Intec's Popular Combatt Nozzles

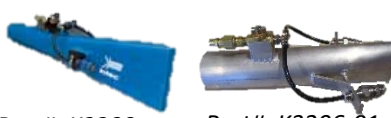


Part#: K3000 2" inlet    Part#: K3001 2-1/2" inlet    Part#: K3002 3" inlet



Hose Packages

### OptiSpray Nozzles



Part#: K3200 2" inlet    Part#: K3206-01 2-1/2" inlet

### Fluid Delivery Systems compact pumps



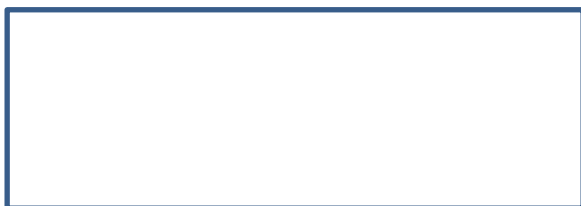
### Spray Tips & Filters



### Recycle Hood



Distributed by



Manufactured by

Insulation Technology Corporation, d.b.a. Intec  
9251 Bruin Boulevard  
Frederick, CO 80504



Local: 303-833-6644  
Fax: 303-833-6650  
sales@inteccorp.com

www.inteccorp.com

... it's the 'tec' inside that counts!

