



cutter FORCE[®] MINI

Closed & Open Cell Wall Scarfing Tool

The wall foam cutting tool designed for the needs of the Professional Contractor!

cutter FORCE[®] is one tool that has been designed to remove both closed cell *and* open cell foam. The MINI is designed for users desiring a 12" scarfing width allowing foam removal in tight areas.



cutter FORCE[®] MINI



cutter FORCE[®] standard

Comparisons – Standard cutter FORCE vs. MINI:

Attribute	Standard	Mini
Roller width	26-1/4"	12+''
Weight	20	17
Drive	belt	belt
# rollers	4	4

integrity

excellence

innovation

trust



www.inteccorp.com

Rev: 20240620

Intec's Professional Grade Equipment

Engineered for High Productivity

Built-to-Last for High Value Generation



Insulation Blowing Machines



Pictures of the MINI

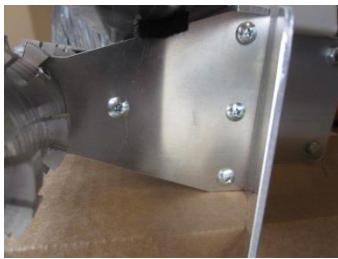
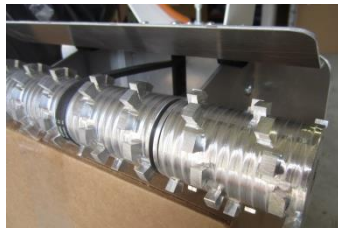
Quick Clean up

- ✓ Same teeth configuration as standard provides popcorn sized foam pieces:

- quick to pick-up.

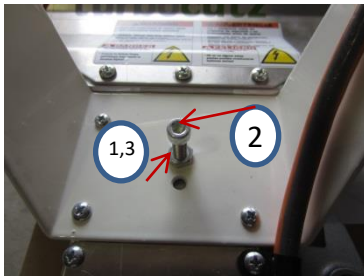
- No dust
- Ease to replace belt

1. Remove two screws holding Service Partners shield in place.
2. Remove 3 screws holding side support. Swing side support down.
3. Slide new belt over roller, side support, and into place on front pulley. Feed thru slot and onto drive pulley.



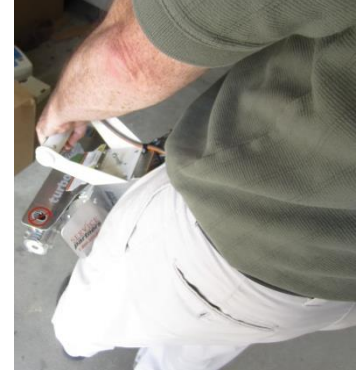
Ease to adjust belt tension

1. Loosen 'jam' nut.
2. Adjust tension as required.
3. Tighten 'jam' nut.



Safety

- ✓ Safety Switch requires two-handed operation.
- ✓ Safety Shield (one on each side) rests on leg preventing contact with roller.



- ✓ Drill Attachment accessory for spot removal (#75111-00).



Additional Intec Systems & Accessories

Heavy Duty Capabilities



Dense Pack



Blow Behind Netting



Spray On



Attics

Intec's Popular Combatt Nozzles



Part#: K3000 2" inlet Part#: K3001 2-1/2" inlet Part#: K3002 3" inlet



Hose Packages

OptiSpray Nozzles



Part#: K3200 2" inlet

Part#: K3206-01 2-1/2" inlet

Fluid Delivery Systems compact pumps



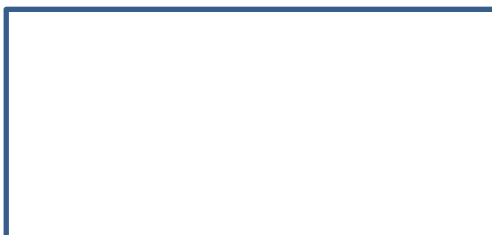
Spray Tips & Filters



Recycle Hood



Distributed by



Manufactured by

Insulation Technology Corporation, d.b.a. Intec
9251 Bruin Boulevard
Frederick, CO 80504



Phone: 303-833-6644
sales@inteccorp.com

www.inteccorp.com



... it's the 'tec' inside that counts!