

GENERATOR

Intec Part #:
77001-30 30kW three phase
77001-31 30kW single phase

Generator

Professional Grade – 30,000 Watts Meets SPF Contractors' Demands
Tier IV compliant



Powered by either:

- Fiat Power Trane (FPT) diesel
- Kubota V2403 diesel



integrity

excellence

innovation

trust

800-666-1611

www.inteccorp.com

Rev: 20240620



Intec's Professional Grade Equipment

Engineered for High Productivity

Built-to-Last for High Value Generation

FORCE[®]

Insulation Blowing Machines

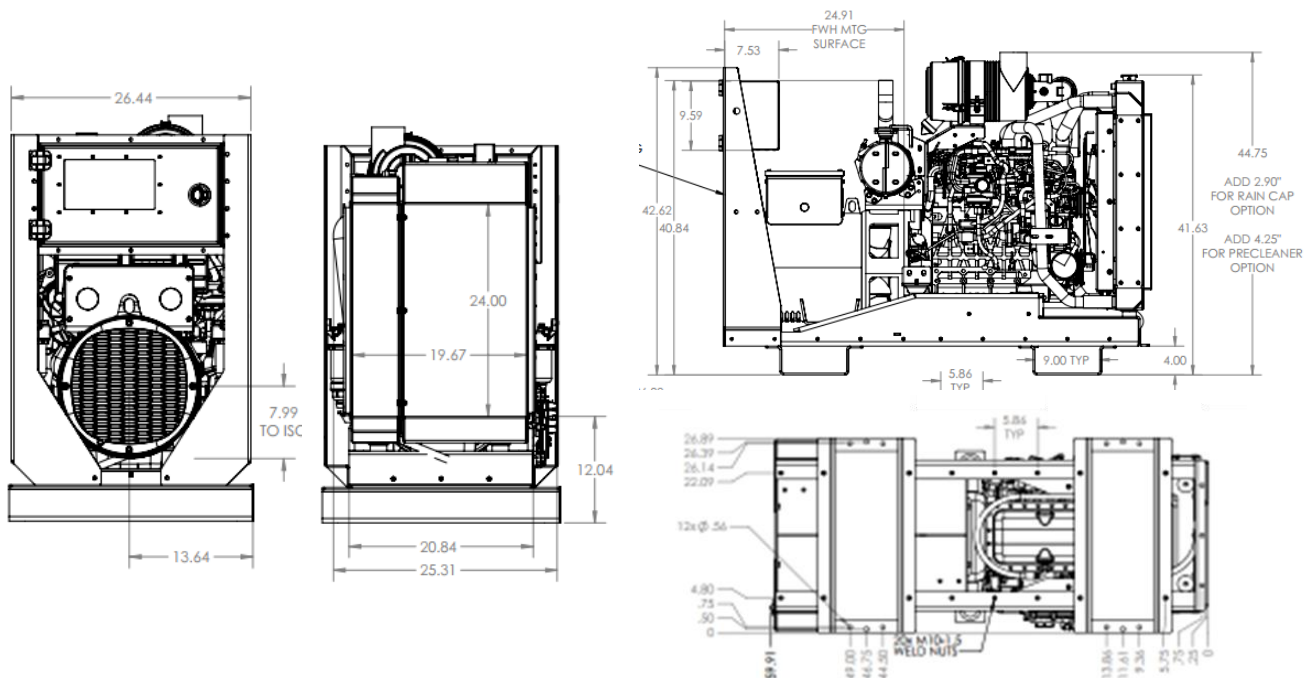


Specifications

Information	Unit	Metrics	
Frequency	Hz	60	
Rated Voltage	V	120 / 240	277 / 480
Standby (Apparent Power)	kVA	30.2	
Standby (Reactive Power)	kW	30.2	24.2
Prime (Apparent Power)	kVA	27.5	
Prime (Reactive Power)	kW	27.5	22
Maximum	A	126	36.4
Continuous	A	114.8	33.1
Breaker	A	150	40
Oil Capacity	qts	10	
Voltage Regulation	Typ/%	AVR +/- 1%	
Fuel Consumption	100% Load	2.41 gal/hr	
	75% Load	1.81 gal/hr	
	50% Load	1.21 gal/hr	
	25% Load	0.60 gal/hr	
Dimensions L X W X H	inches	59.6 X 26.9 X 44.8	
Dry Weight	lbs	1790	
Net Weight	lbs	1805	

Specifications subject to change; contact Intec for current specifications

Dimensions



Features

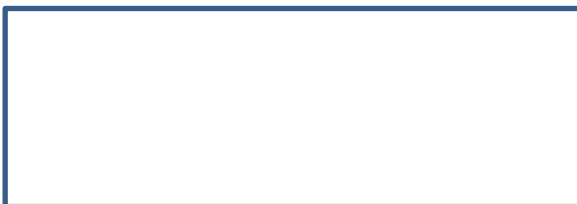
GENERATOR

- Low vibration and smooth running
- Quiet and clean running engines
- Mains breaker included
- Monitoring of Voltage, Frequency, and Current
- Fuel efficient operation with electronic fuel systems
- Safety shutdown for temperatures, pressure, & emergency stop
- Mecc-Alte Generator
- Deep Sea Controls

POWER CONFIGURATIONS

- Single phase & Three phase available

Distributed by



Manufactured by

Insulation Technology Corporation, d.b.a. Intec
9251 Bruin Boulevard
Frederick, CO 80504



phone: 303-833-6644
sales@intecorp.com

www.intecorp.com



... it's the 'tec' inside that counts!