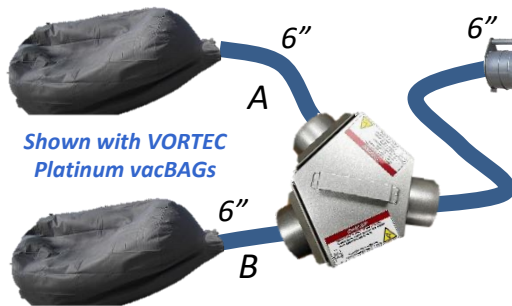


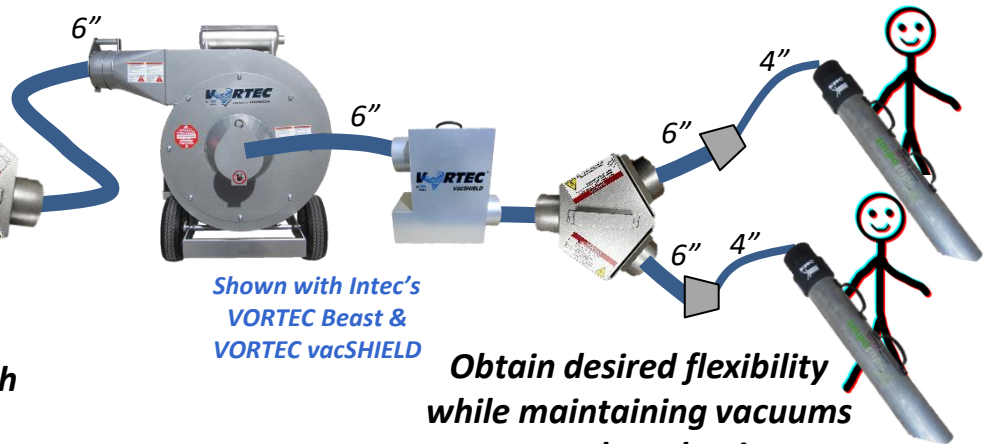
Accelerate insulation removal profitability - Intec's VORTEC twin TURBO!

Eliminate Bag Change Down Time



Keep filling bags with no down-time

2 Individuals with One Vacuum



Obtain desired flexibility while maintaining vacuums natural production

Eliminate Bag Change Down Time

- ✓ Place vacuum bag on outlets A & B.
- ✓ Divert all Product to A until bag is full.
- ✓ Divert product to B while changing out bag A

Save over ½ hour per house down time

- Average house consumes 7 vacuum bags
- Each vac bag changeout takes 5-10 minutes

2 Individuals with One Vacuum

- ✓ Utilize 4" hose for portability and flexibility in attic while allowing for vacuum's natural production with 6" hose.
- ✓ Recommendation to connect vacSHIELD to front of vacuum, then connect twin TURBO to vacSHIELD.
- ✓ 6" to 4" reducer

Note: Can be used with all vacuums using 6" hose

integrity

excellence

innovation

trust

303-833-6644

www.inteccorp.com

Rev: 20240620

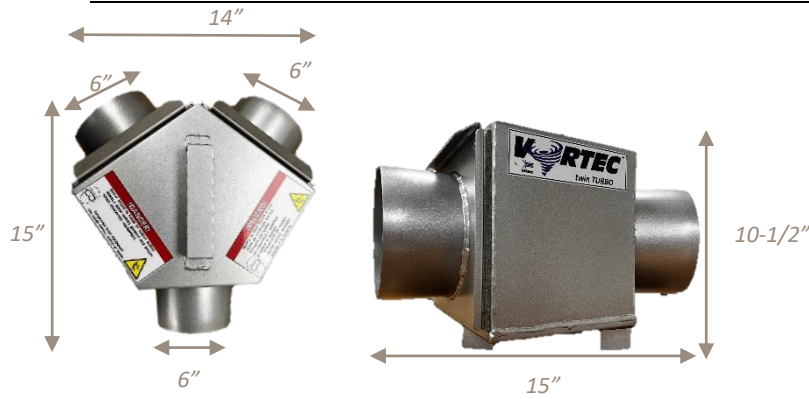


FORCE[®]

Insulation Blowing Machines



Specifications



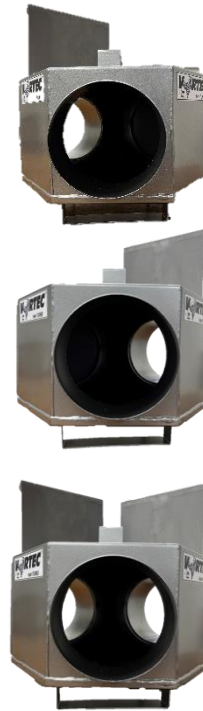
- Powder coated steel construction
- 6" inlets / outlets
- Slide Gate with gasket to open / close desired port
- Handles: 1 on top; 2 on bottom
- 20.7 pounds

Specifications subject to change; contact Intec for current specifications

Utilize for inlet or outlet of vacuum to increase productivity

Additional Accessories

Features



Provides for flexibility in your operation to maximize efficiencies & savings

Open one side

Open other side

Open both sides



shown with VORTEC Beast vacuum



Enhance Safety & Extend the Vacuum's Life

- ✓ Safety enhanced by limiting foreign objects from exiting vacuum at high speeds.
- ✓ Vacuum's Life extended by preventing foreign materials from entering the vacuum & potentially causing damage to the impeller, shroud, and engine.



Simplify pickup

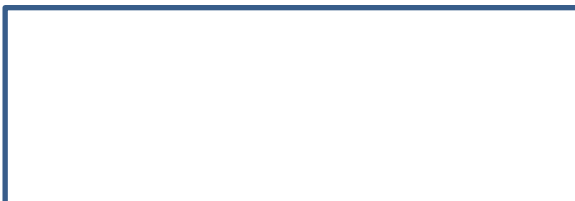
- ✓ 4" and 6" diameters, 4' and 2' lengths.
- ✓ Swivel hose connector simplifies movement.



- ✓ Translucent ~ see product flow
 - ✓ Extra durable to resist punctures
 - ✓ Smooth interior for enhanced production
 - ✓ Blue wear strip extends life
- also look to Intec for vacuum bags



Distributed by



Manufactured by

Insulation Technology Corporation, d.b.a. Intec
9251 Bruin Boulevard
Frederick, CO 80504



phone: 303-833-6644
sales@inteccorp.com

www.inteccorp.com



... it's the 'tec' inside that counts!